

23/00116/NEWDEV - Former Poison Cross Nursery, Foxborough Hill, Woodnesborough.  
Street consultation plan for the proposed street name "Kings Oak Drive"



Legend

- Proposed Native Tree Planting (indicative)
- Existing Tree
- Existing Tree removed
- Root Protection Zone
- Boundary wall (2.1m high)
- Fencing (1.8m high close boarded fence)
- Fencing (2.1m high screen fence - hit & miss)
- Fencing (1.2m high post and rail fence)
- Road (tarmac)
- Pathway (tarmac)
- Driveway (bound gravel)
- Patio (slabs)
- Grass
- Refuse/recycling bins
- Shed (includes secure cycle parking)

Parking Space dimensions:

- Generally 2.5m wide x 5.0m long (6.0m in front of garages).
- With wall/fence/landscaping to one side 2.7m wide x 5.0m long.
- With obstructions to both sides 2.9m wide x 5.0m long.
- Where space serves as pedestrian route to the front door 3.2m wide x 5.0m long.
- Lay-by spaces should be min. 2.0m wide x 6.0m long (increased to 2.5m wide where not abutted by footpath).

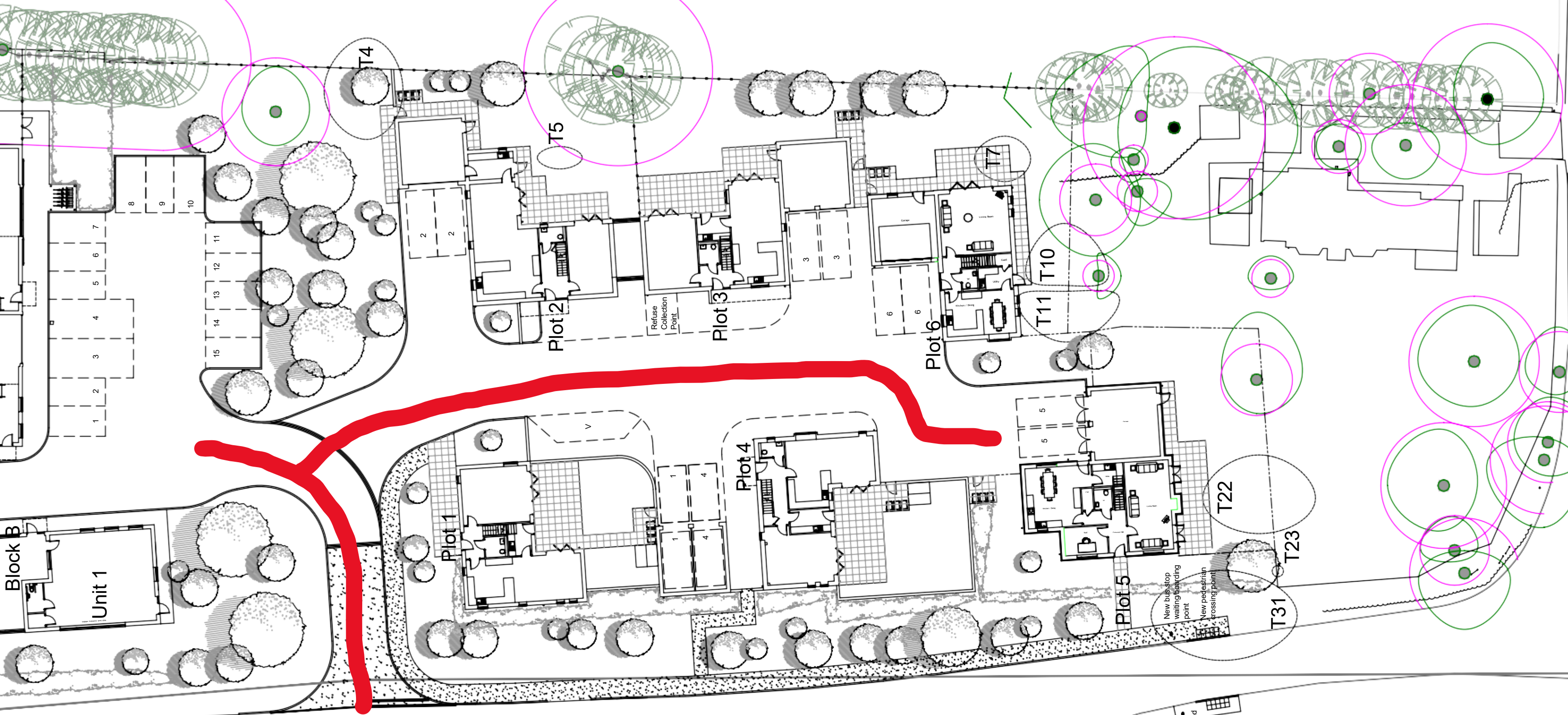
STATENBOROUGH LANE

FOXBOROUGH HILL

GP

DRAINLESS ROAD

Stone



- D 11.10.21 Bus stop position amended
- C 11.05.21 Commercial units & Plot 5 position amended, additional parking bays added
- 11.03.21 Boundary fences amended
- 09.03.21 Cycle stores added to commercial areas

The Wysepian Building, Occupation Rd, Wye, Ashford, Kent, TN25 5EN 01233 812 148 <a href="http://www.osgarchitecture.com">www.osgarchitecture.com</a>	

Project Title:  
Proposed Development at former Martins Nursery Site, Poison Cross, Eastry, Kent, CT13 0DT  
For Wilmshurst Developments Ltd

Drawing Description:  
Proposed Residential Site Plan

Scale @ A1: 1:200	Date: March 2021
----------------------	---------------------

Drawn By: TK	Checked By: TK
-----------------	-------------------

Purpose:  
**PLANNING**

Drawing No. 17_0448_05	Rev. D
---------------------------	-----------

Notes:  
• Do not scale.  
• The contractor is responsible for checking dimensions, tolerances and references. Report all discrepancies to OSG Architecture Limited before proceeding with the works.  
• Where an item is covered by drawings to different scales the larger scale drawing is to be worked to.

